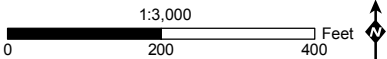


Figure A-6: Special-Status Wildlife Occurrences Map 1 of 33

Pipeline Safety & Reliability Project

- | | | | |
|--------------------------------------|--|-------------------------------------|------------------|
| ■ Milepost | Permanent Impacts | --- Biological Resource Survey Area | ● Yellow warbler |
| — Proposed Project Route | — Aboveground Facility | --- City/County Boundary | |
| --- Proposed Trenchless Construction | Temporary Impacts | | |
| — Cross-Tie Connector Line | — Horizontal Directional Drill Workspace | | |
| — Existing Facility | — Laydown Area | | |
| | — Workspace | | |



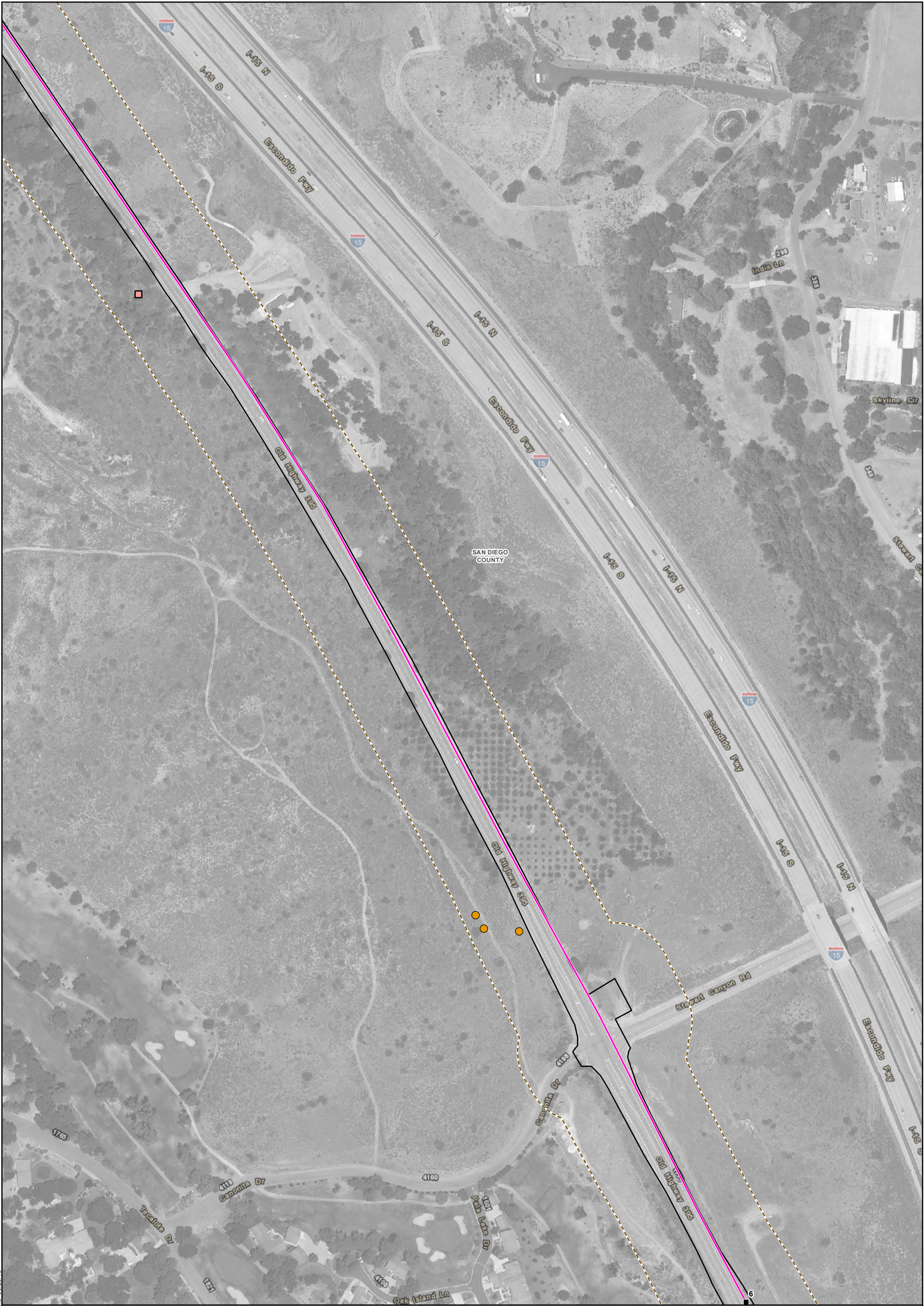
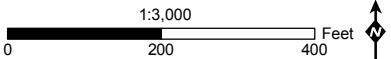


Figure A-6: Special-Status Wildlife Occurrences Map 2 of 33 **Pipeline Safety & Reliability Project**

<ul style="list-style-type: none">■ Milepost— Proposed Project Route- - - Proposed Trenchless Construction— Cross-Tie Connector LineExisting Facility	Permanent Impacts <ul style="list-style-type: none">Aboveground Facility Temporary Impacts <ul style="list-style-type: none">Horizontal Directional Drill WorkspaceLaydown AreaWorkspace	<ul style="list-style-type: none">Biological Resource Survey AreaCity/County BoundaryCoastal California gnatcatcherRed-tailed hawk nest
---	--	--



MXDs\BTR\Wildlife.mxd 09/25/15

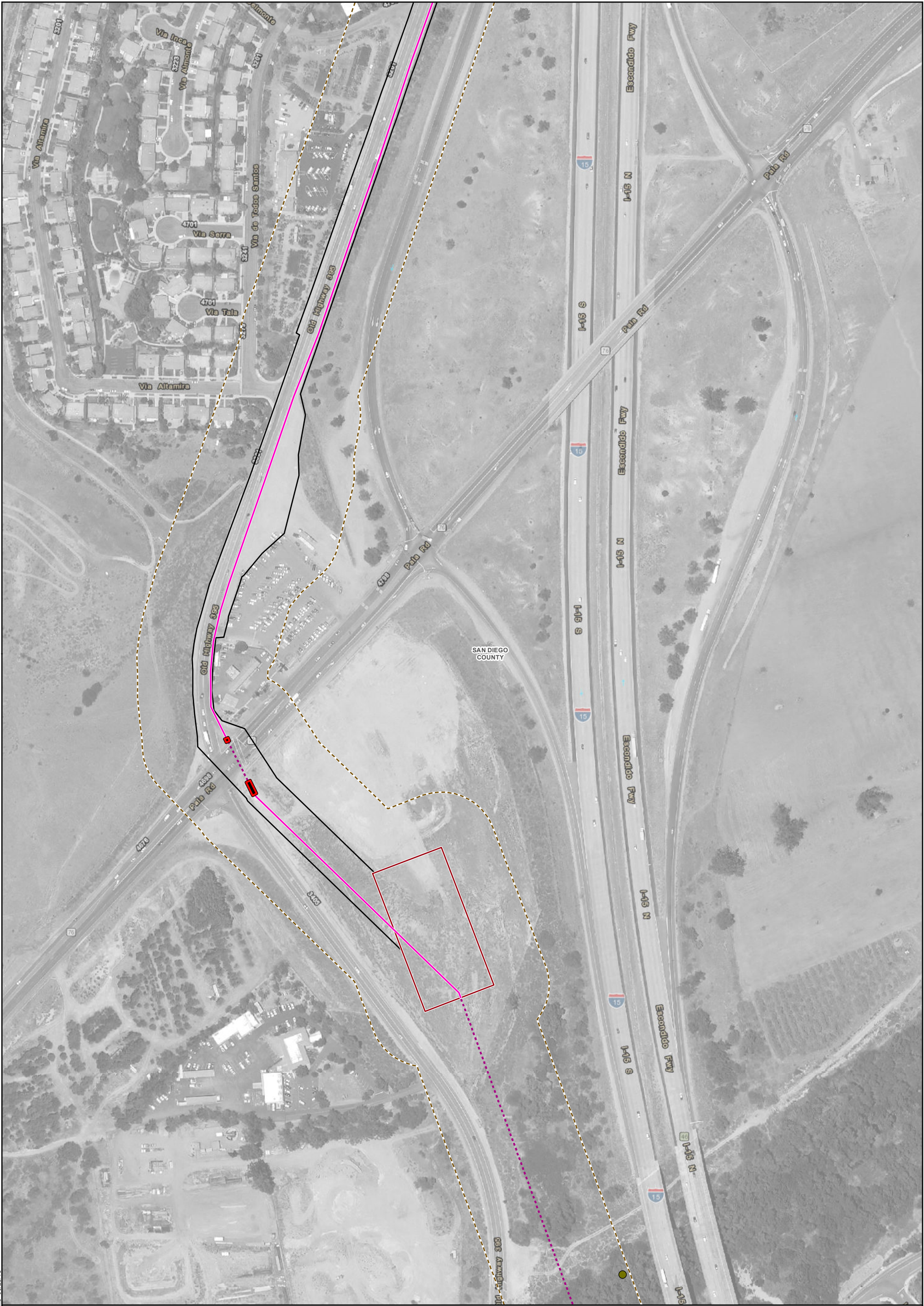


Figure A-6: Special-Status Wildlife Occurrences Map 3 of 33

Pipeline Safety & Reliability Project

- | | | | |
|--------------------------------------|--|-----------------------------------|------------------|
| ■ Milepost | Permanent Impacts | ■ Biological Resource Survey Area | ● Yellow warbler |
| — Proposed Project Route | ▭ Aboveground Facility | ▭ City/County Boundary | |
| --- Proposed Trenchless Construction | Temporary Impacts | | |
| — Cross-Tie Connector Line | ▭ Horizontal Directional Drill Workspace | | |
| ▭ Existing Facility | ▭ Laydown Area | | |
| | ▭ Workspace | | |

1:3,000
0 200 400 Feet





Figure A-6: Special-Status Wildlife Occurrences Map 4 of 33

Pipeline Safety & Reliability Project

- Milepost

Proposed Project Route

Proposed Trenchless Construction

Cross-Tie Connector Line

Existing Facility

Permanent Impacts

Aboveground Facility

Temporary Impacts

Horizontal Directional Drill Workspace

Laydown Area

Workspace

Biological Resource Survey Area

City/County Boundary

Coastal California gnatcatcher

Least Bell's vireo

Yellow warbler

SoCalGas

Sempra Energy utility

SDGE

Sempra Energy utility

INSIGNIA

ENVIRONMENTAL

MXDs\BTR\Wide\mxd 09/25/15

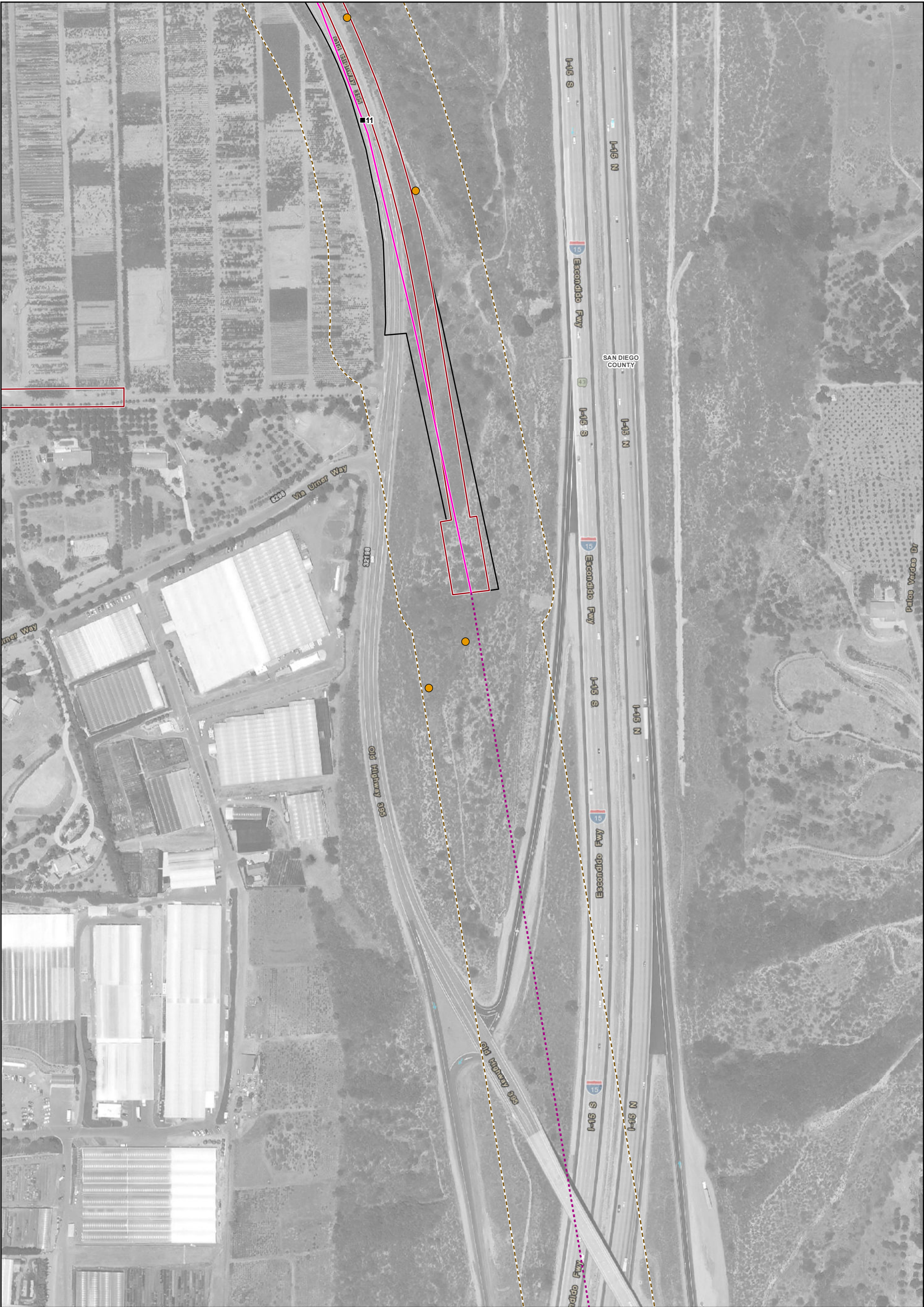


Figure A-6: Special-Status Wildlife Occurrences Map 5 of 33

Pipeline Safety & Reliability Project

- Milepost

— Proposed Project Route

--- Proposed Trenchless Construction

— Cross-Tie Connector Line

▭ Existing Facility

Permanent Impacts

▭ Aboveground Facility

Temporary Impacts

▭ Horizontal Directional Drill Workspace

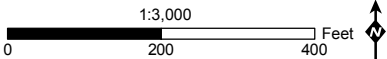
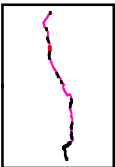
▭ Laydown Area

▭ Workspace

▭ Biological Resource Survey Area

▭ City/County Boundary

● Coastal California gnatcatcher



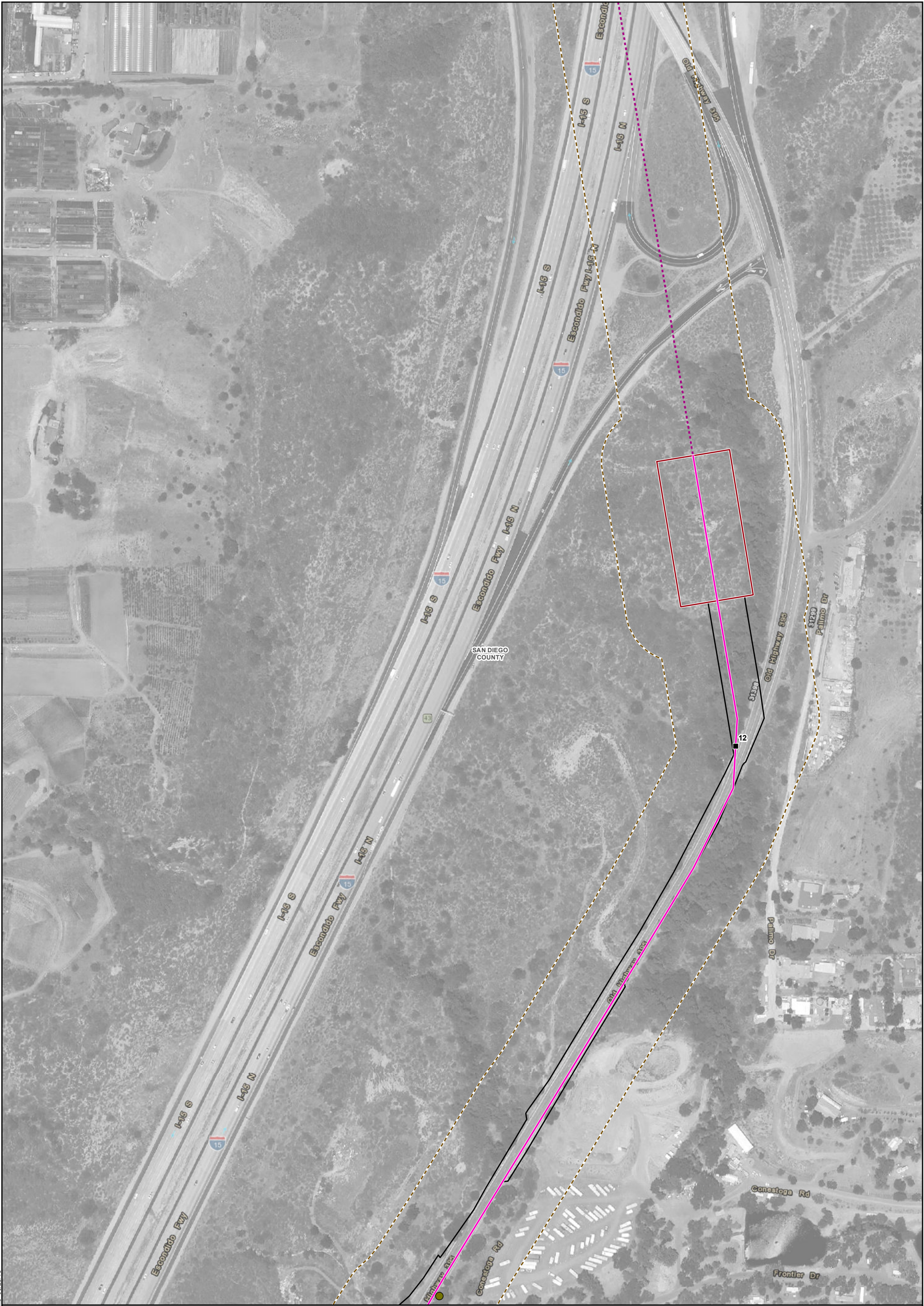


Figure A-6: Special-Status Wildlife Occurrences Map 6 of 33

Pipeline Safety & Reliability Project

- | | | | |
|--------------------------------------|--|-----------------------------------|------------------|
| ■ Milepost | Permanent Impacts | ▭ Biological Resource Survey Area | ● Yellow warbler |
| — Proposed Project Route | ▭ Aboveground Facility | ▭ City/County Boundary | |
| --- Proposed Trenchless Construction | Temporary Impacts | | |
| — Cross-Tie Connector Line | ▭ Horizontal Directional Drill Workspace | | |
| ▭ Existing Facility | ▭ Laydown Area | | |
| | ▭ Workspace | | |

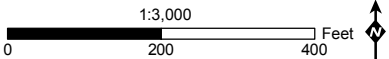




Figure A-6: Special-Status Wildlife Occurrences Map 7 of 33

Pipeline Safety & Reliability Project

■ Milepost

— Proposed Project Route

--- Proposed Trenchless Construction

— Cross-Tie Connector Line

— Existing Facility

Permanent Impacts

— Aboveground Facility

Temporary Impacts

— Horizontal Directional Drill Workspace

— Laydown Area

— Workspace

--- Biological Resource Survey Area

--- City/County Boundary

■ Belding's orange-throated whiptail

● Yellow warbler

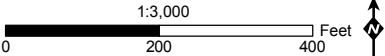
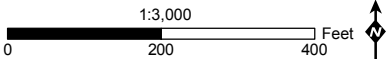




Figure A-6: Special-Status Wildlife Occurrences Map 8 of 33

Pipeline Safety & Reliability Project

■ Milepost	Permanent Impacts	--- Biological Resource Survey Area	■ Belding's orange-throated whiptail
— Proposed Project Route	▭ Aboveground Facility	▭ City/County Boundary	● Western pond turtle
--- Proposed Trenchless Construction	Temporary Impacts		
— Cross-Tie Connector Line	▭ Horizontal Directional Drill Workspace		
▭ Existing Facility	▭ Laydown Area		
	▭ Workspace		



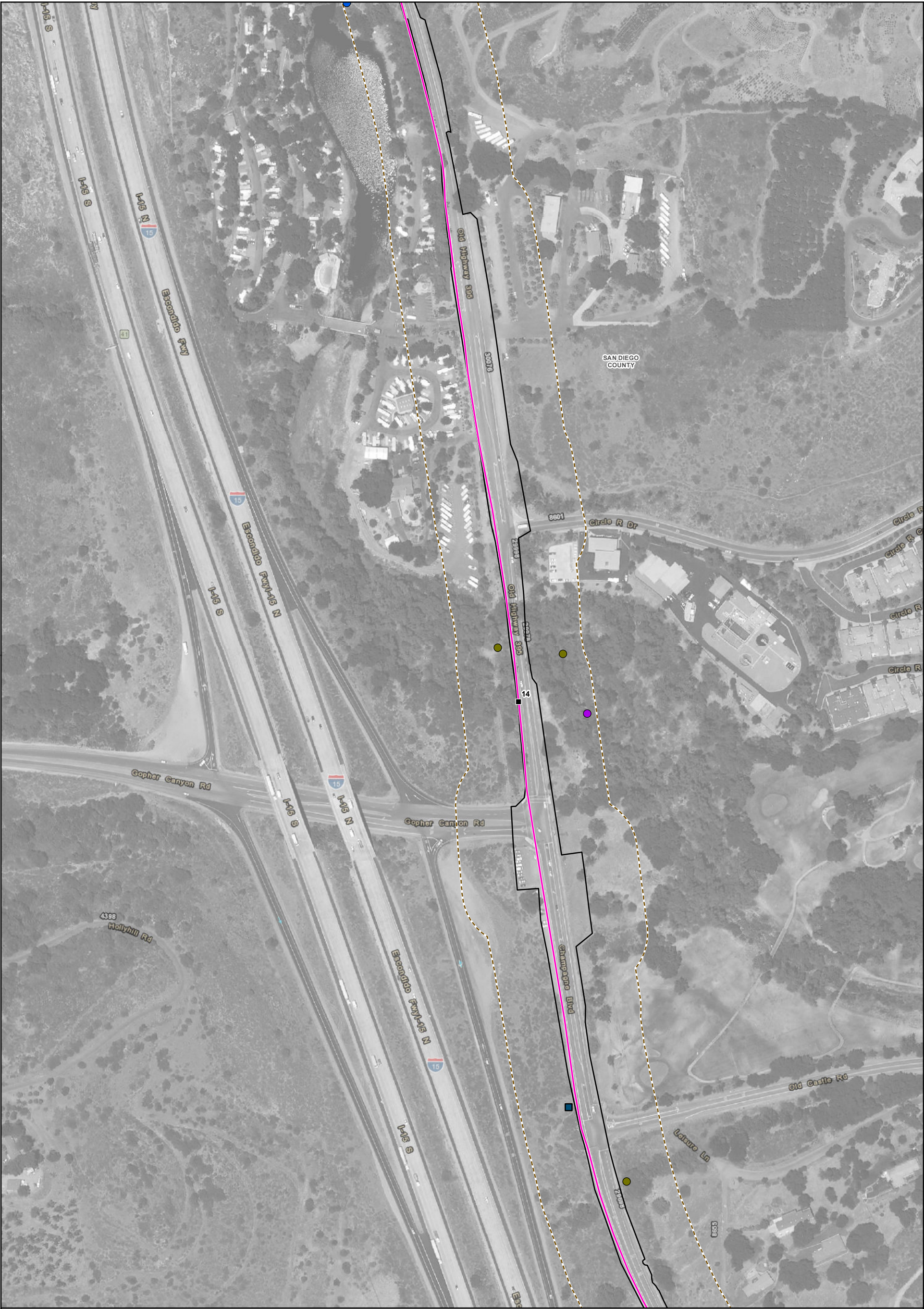


Figure A-6: Special-Status Wildlife Occurrences Map 9 of 33

Pipeline Safety & Reliability Project

■ Milepost	Permanent Impacts	--- Biological Resource Survey Area	● Least Bell's vireo
— Proposed Project Route	▭ Aboveground Facility	▭ City/County Boundary	■ Belding's orange-throated whiptail
- - - Proposed Trenchless Construction	Temporary Impacts		● Western pond turtle
— Cross-Tie Connector Line	▭ Horizontal Directional Drill Workspace		● Yellow warbler
▭ Existing Facility	▭ Laydown Area		
	▭ Workspace		

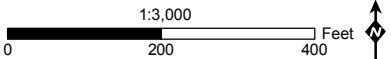




Figure A-6: Special-Status Wildlife Occurrences Map 10 of 33 Pipeline Safety & Reliability Project

■ Milepost

— Proposed Project Route

--- Proposed Trenchless Construction

— Cross-Tie Connector Line

Existing Facility

Permanent Impacts

Aboveground Facility

Temporary Impacts

Horizontal Directional Drill Workspace

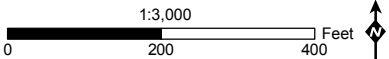
Laydown Area

Workspace

Biological Resource Survey Area

City/County Boundary

Hermes copper butterfly host plant (spiny redberry)



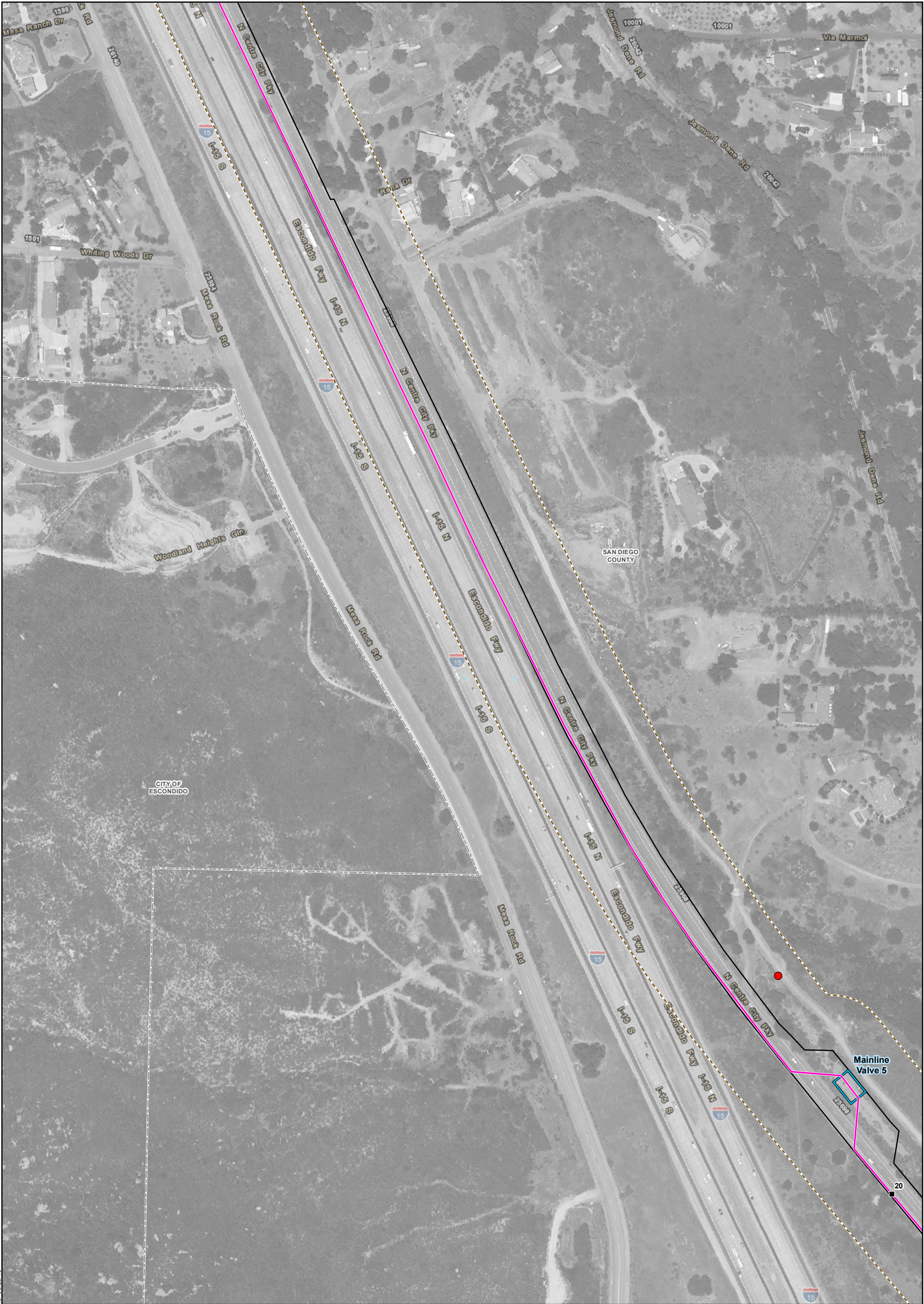


Figure A-6: Special-Status Wildlife Occurrences Map 11 of 33 Pipeline Safety & Reliability Project

■ Milepost

— Proposed Project Route

--- Proposed Trenchless Construction

— Cross-Tie Connector Line

Existing Facility

Permanent Impacts

Aboveground Facility

Temporary Impacts

Horizontal Directional Drill Workspace

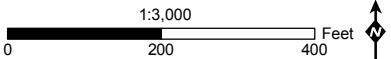
Laydown Area

Workspace

Biological Resource Survey Area

City/County Boundary

Hermes copper butterfly host plant (spiny redberry)



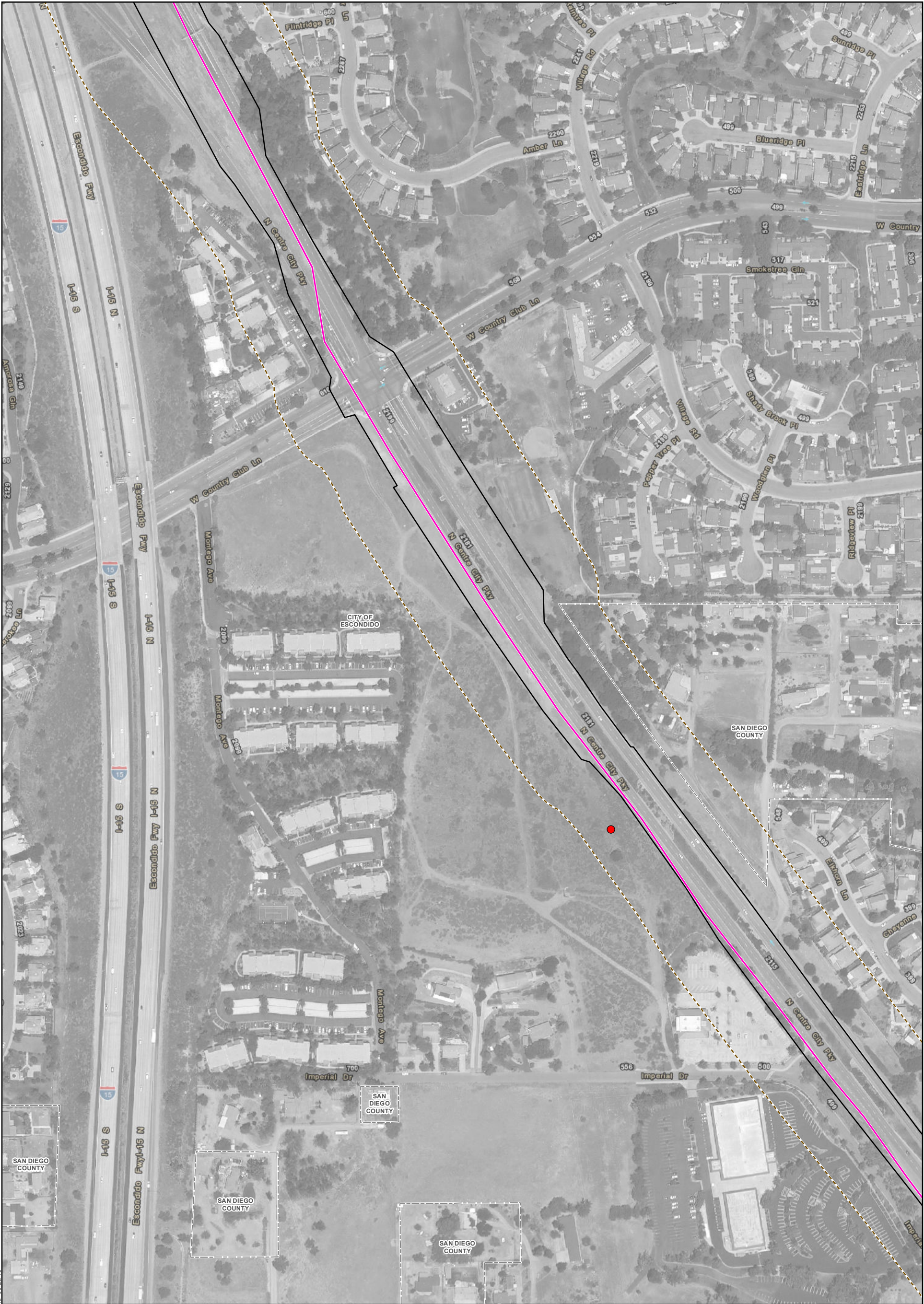


Figure A-6: Special-Status Wildlife Occurrences Map 12 of 33

Pipeline Safety & Reliability Project

Milepost

Proposed Project Route

Proposed Trenchless Construction

Cross-Tie Connector Line

Existing Facility

Permanent Impacts

Aboveground Facility

Temporary Impacts

Horizontal Directional Drill Workspace

Laydown Area

Workspace

Biological Resource Survey Area

City/County Boundary

Hermes copper butterfly host plant (spiny redberry)

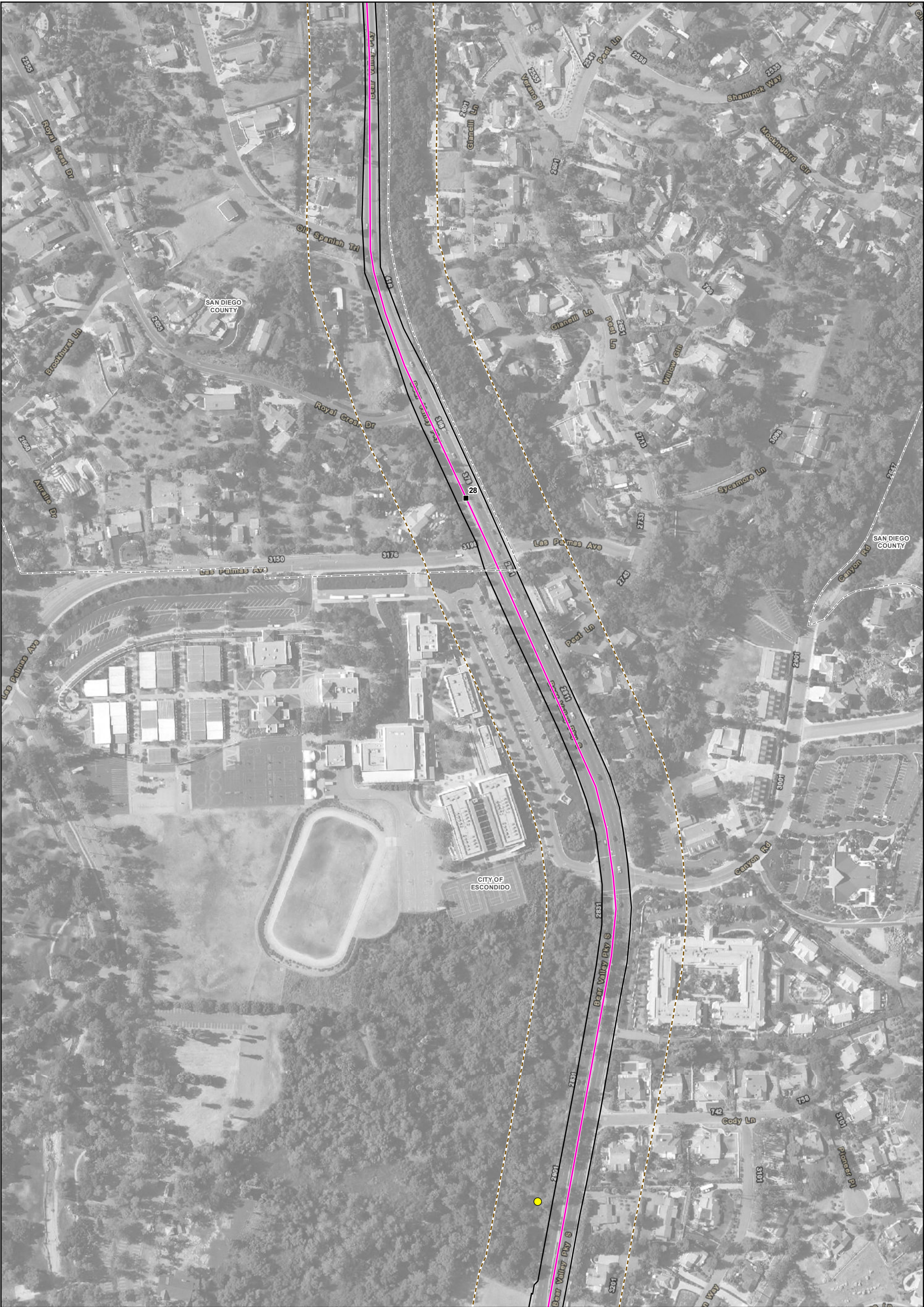
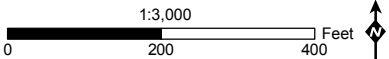


Figure A-6: Special-Status Wildlife Occurrences Map 13 of 33 **Pipeline Safety & Reliability Project**

- | | | | |
|--------------------------------------|--|-------------------------------------|------------------------|
| ■ Milepost | Permanent Impacts | --- Biological Resource Survey Area | ● Yellow-breasted chat |
| — Proposed Project Route | ▭ Aboveground Facility | ▭ City/County Boundary | |
| --- Proposed Trenchless Construction | Temporary Impacts | | |
| — Cross-Tie Connector Line | ▭ Horizontal Directional Drill Workspace | | |
| ▭ Existing Facility | ▭ Laydown Area | | |
| | ▭ Workspace | | |



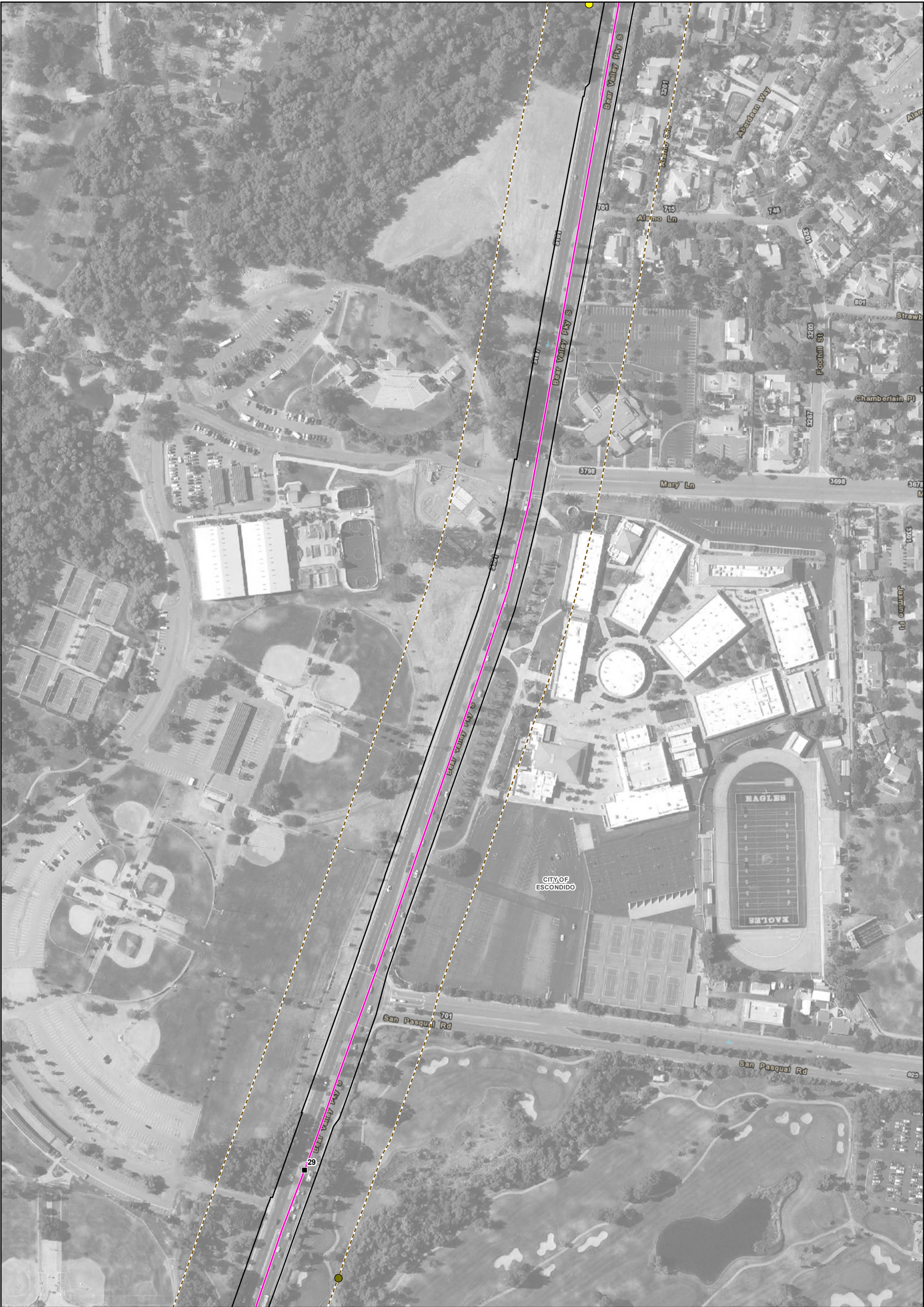


Figure A-6: Special-Status Wildlife Occurrences Map 14 of 33 Pipeline Safety & Reliability Project

- Milepost

— Proposed Project Route

--- Proposed Trenchless Construction

— Cross-Tie Connector Line

Existing Facility

Permanent Impacts

Aboveground Facility

Temporary Impacts

Horizontal Directional Drill Workspace

Laydown Area

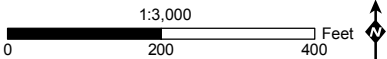
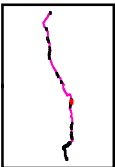
Workspace

Biological Resource Survey Area

City/County Boundary

Yellow-breasted chat

Yellow warbler



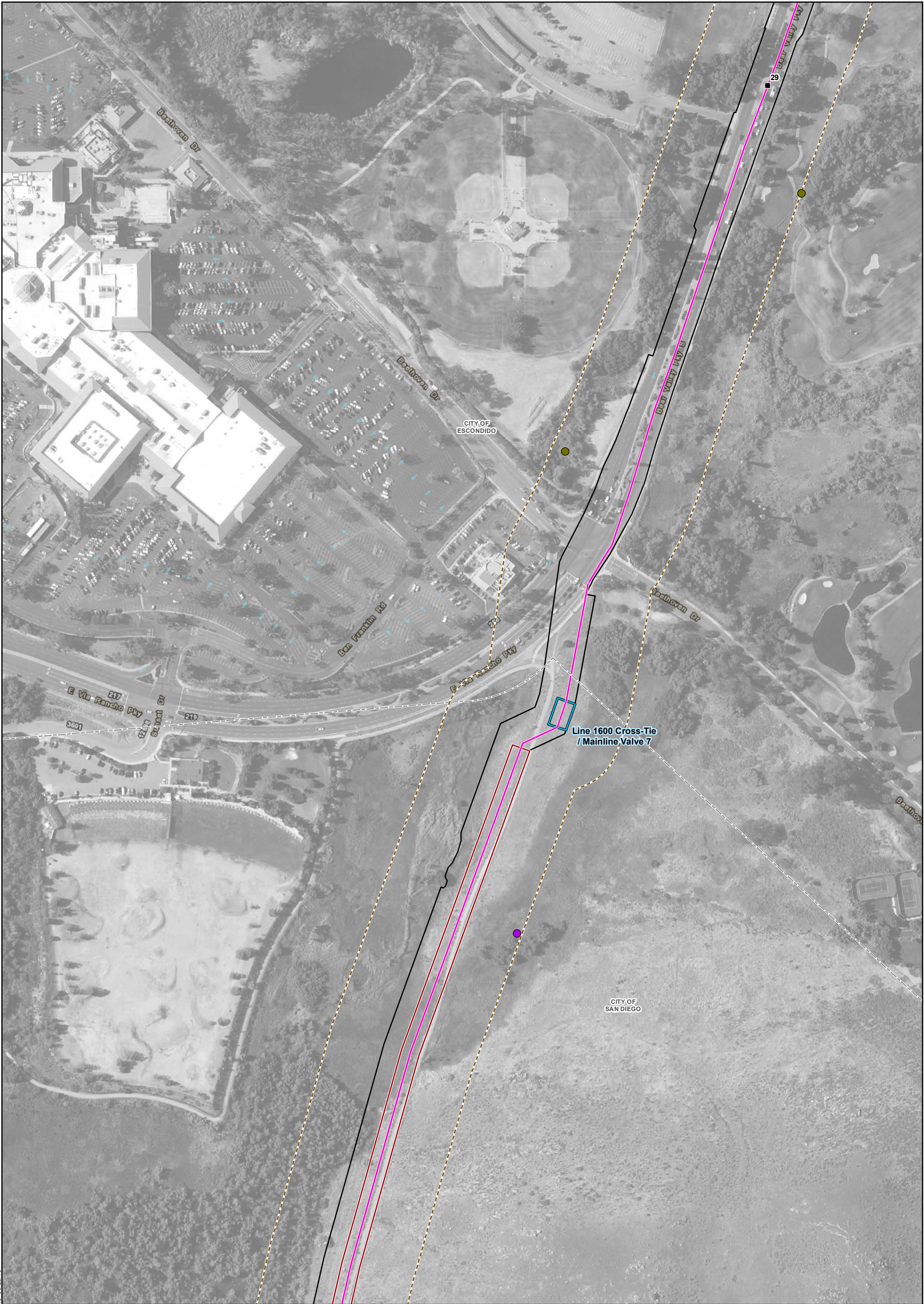


Figure A-6: Special-Status Wildlife Occurrences Map 15 of 33

Pipeline Safety & Reliability Project

- | | | | |
|--------------------------------------|--|-------------------------------------|----------------------|
| ■ Milepost | Permanent Impacts | --- Biological Resource Survey Area | ● Least Bell's vireo |
| — Proposed Project Route | ▭ Aboveground Facility | --- City/County Boundary | ● Yellow warbler |
| --- Proposed Trenchless Construction | Temporary Impacts | | |
| — Cross-Tie Connector Line | ▭ Horizontal Directional Drill Workspace | | |
| ▭ Existing Facility | ▭ Laydown Area | | |
| | ▭ Workspace | | |

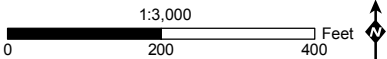




Figure A-6: Special-Status Wildlife Occurrences Map 16 of 33

Pipeline Safety & Reliability Project

- | | | | |
|--------------------------------------|--|-----------------------------------|----------------------|
| ■ Milepost | Permanent Impacts | ▭ Biological Resource Survey Area | ● Least Bell's vireo |
| — Proposed Project Route | ▭ Aboveground Facility | ▭ City/County Boundary | |
| ... Proposed Trenchless Construction | Temporary Impacts | | |
| — Cross-Tie Connector Line | ▭ Horizontal Directional Drill Workspace | | |
| ▭ Existing Facility | ▭ Laydown Area | | |
| | ▭ Workspace | | |

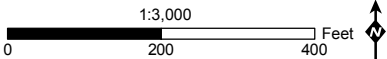
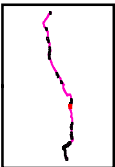




Figure A-6: Special-Status Wildlife Occurrences Map 17 of 33 Pipeline Safety & Reliability Project

- Milepost

— Proposed Project Route

--- Proposed Trenchless Construction

— Cross-Tie Connector Line

Existing Facility

Permanent Impacts

Aboveground Facility

Temporary Impacts

Horizontal Directional Drill Workspace

Laydown Area

Workspace

Biological Resource Survey Area

City/County Boundary

Coastal California gnatcatcher

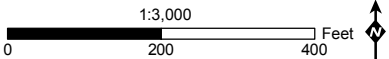
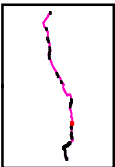




Figure A-6: Special-Status Wildlife Occurrences Map 18 of 33

Pipeline Safety & Reliability Project

- | | | | |
|--|--|-------------------------------------|----------------------------------|
| ■ Milepost | Permanent Impacts | --- Biological Resource Survey Area | ● Coastal California gnatcatcher |
| — Proposed Project Route | ▭ Aboveground Facility | ▭ City/County Boundary | |
| - - - Proposed Trenchless Construction | Temporary Impacts | | |
| — Cross-Tie Connector Line | ▭ Horizontal Directional Drill Workspace | | |
| ▭ Existing Facility | ▭ Laydown Area | | |
| | ▭ Workspace | | |

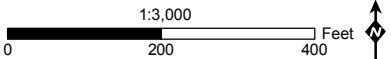




Figure A-6: Special-Status Wildlife Occurrences Map 19 of 33 Pipeline Safety & Reliability Project

■ Milepost

Proposed Project Route

Proposed Trenchless Construction

Cross-Tie Connector Line

Existing Facility

Permanent Impacts

Aboveground Facility

Temporary Impacts

Horizontal Directional Drill Workspace

Laydown Area

Workspace

Biological Resource Survey Area

City/County Boundary

Coastal California gnatcatcher

SoCalGas

SDGE

NSIGNIA

MXDs\BTR\Widfile.mxd 09/25/15



Figure A-6: Special-Status Wildlife Occurrences Map 20 of 33

Pipeline Safety & Reliability Project

Milepost

Proposed Project Route

Proposed Trenchless Construction

Cross-Tie Connector Line

Existing Facility

Aboveground Facility

Horizontal Directional Drill Workspace

Laydown Area

Workspace

Biological Resource Survey Area

City/County Boundary

Willow flycatcher (subspecies undetermined)

Hermes copper butterfly host plant (spiny redberry)

SoCalGas

Sempra Energy

SDGE

Sempra Energy

NSIGNIA

ENVIRONMENTAL

MXDs\BTR\Widefile.mxd 09/25/15



Figure A-6: Special-Status Wildlife Occurrences Map 21 of 33

Pipeline Safety & Reliability Project

- Milepost

— Proposed Project Route

--- Proposed Trenchless Construction

— Cross-Tie Connector Line

▭ Existing Facility
- Permanent Impacts**

▭ Aboveground Facility

Temporary Impacts

▭ Horizontal Directional Drill Workspace

▭ Laydown Area

▭ Workspace
- ▭ Biological Resource Survey Area

▭ City/County Boundary

● Hermes copper butterfly host plant (spiny redberry)

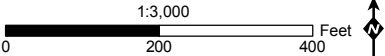
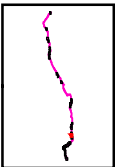




Figure A-6: Special-Status Wildlife Occurrences Map 22 of 33

Pipeline Safety & Reliability Project

■ Milepost	Permanent Impacts	--- Biological Resource Survey Area	● Coastal California gnatcatcher
— Proposed Project Route	▭ Aboveground Facility	▭ City/County Boundary	● Hermes copper butterfly host plant (spiny redberry)
- - - Proposed Trenchless Construction	Temporary Impacts		
— Cross-Tie Connector Line	▭ Horizontal Directional Drill Workspace		
▭ Existing Facility	▭ Laydown Area		
	▭ Workspace		

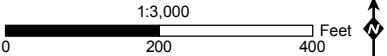




Figure A-6: Special-Status Wildlife Occurrences Map 23 of 33 Pipeline Safety & Reliability Project

■ Milepost

— Proposed Project Route

--- Proposed Trenchless Construction

— Cross-Tie Connector Line

Existing Facility

Permanent Impacts

Aboveground Facility

Temporary Impacts

Horizontal Directional Drill Workspace

Laydown Area

Workspace

Biological Resource Survey Area

City/County Boundary

● Hermes copper butterfly host plant (spiny redberry)

1:3,000

0 200 400 Feet

↑

SoCalGas

SDGE

NSIGNIA

MXDs\BTR\Widefile.mxd 09/25/15



Figure A-6: Special-Status Wildlife Occurrences Map 24 of 33

Pipeline Safety & Reliability Project

■ Milepost

— Proposed Project Route

--- Proposed Trenchless Construction

— Cross-Tie Connector Line

— Existing Facility

Permanent Impacts

— Aboveground Facility

Temporary Impacts

— Horizontal Directional Drill Workspace

— Laydown Area

— Workspace

--- Biological Resource Survey Area

--- City/County Boundary

■ Belding's orange-throated whiptail

● Hermes copper butterfly host plant (spiny redberry)

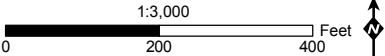




Figure A-6: Special-Status Wildlife Occurrences Map 25 of 33 Pipeline Safety & Reliability Project

■ Milepost

— Proposed Project Route

--- Proposed Trenchless Construction

— Cross-Tie Connector Line

Existing Facility

Permanent Impacts

Aboveground Facility

Temporary Impacts

Horizontal Directional Drill Workspace

Laydown Area

Workspace

Biological Resource Survey Area

City/County Boundary

Belding's orange-throated whiptail

Hermes copper butterfly host plant (spiny redberry)

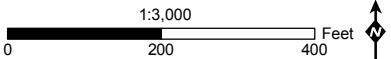




Figure A-6: Special-Status Wildlife Occurrences Map 26 of 33 Pipeline Safety & Reliability Project

■ Milepost

— Proposed Project Route

--- Proposed Trenchless Construction

— Cross-Tie Connector Line

Existing Facility

Permanent Impacts

Aboveground Facility

Temporary Impacts

Horizontal Directional Drill Workspace

Laydown Area

Workspace

Biological Resource Survey Area

City/County Boundary

● Hermes copper butterfly host plant (spiny redberry)

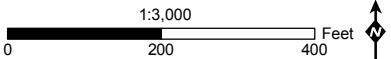




Figure A-6: Special-Status Wildlife Occurrences Map 27 of 33 Pipeline Safety & Reliability Project

■ Milepost

— Proposed Project Route

--- Proposed Trenchless Construction

— Cross-Tie Connector Line

Existing Facility

Permanent Impacts

Aboveground Facility

Temporary Impacts

Horizontal Directional Drill Workspace

Laydown Area

Workspace

Biological Resource Survey Area

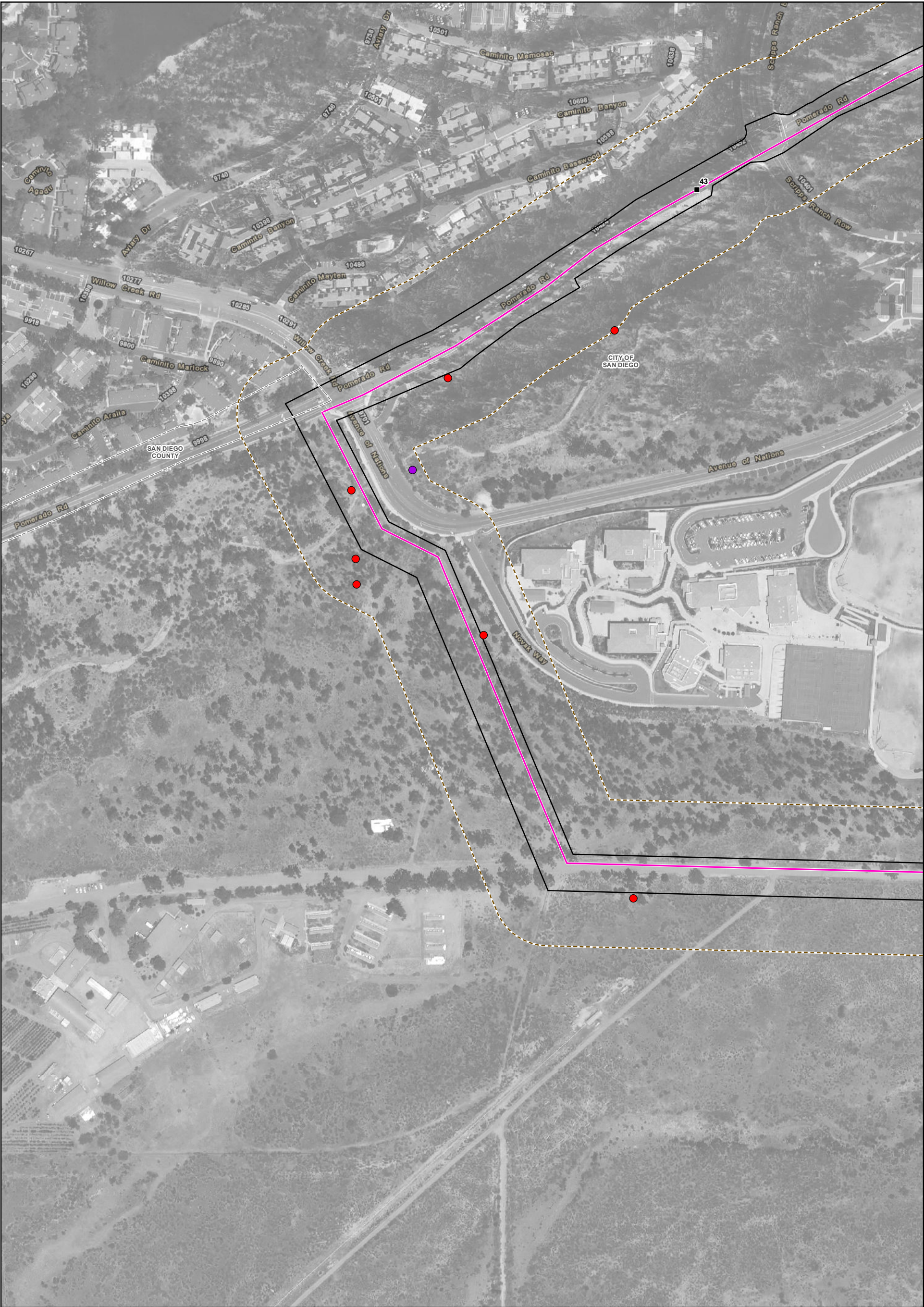
City/County Boundary

Hermes copper butterfly host plant (spiny redberry)

Socalgas.com

SDGE.com

NSIGNIA.com



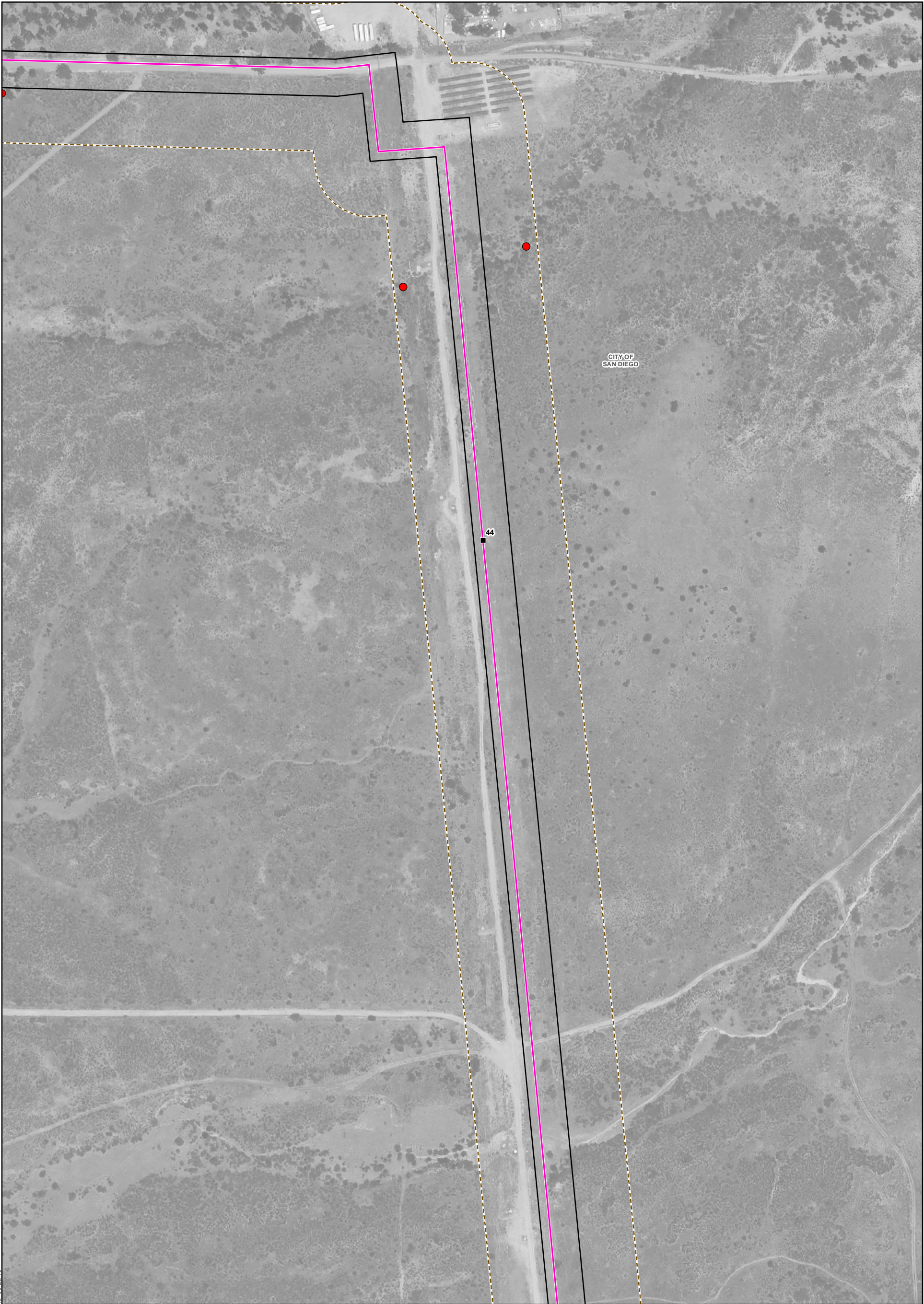


Figure A-6: Special-Status Wildlife Occurrences Map 29 of 33

Pipeline Safety & Reliability Project

■ Milepost

— Proposed Project Route

--- Proposed Trenchless Construction

— Cross-Tie Connector Line

Existing Facility

Permanent Impacts

Aboveground Facility

Temporary Impacts

Horizontal Directional Drill Workspace

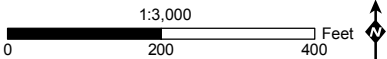
Laydown Area

Workspace

Biological Resource Survey Area

City/County Boundary

● Hermes copper butterfly host plant (spiny redberry)



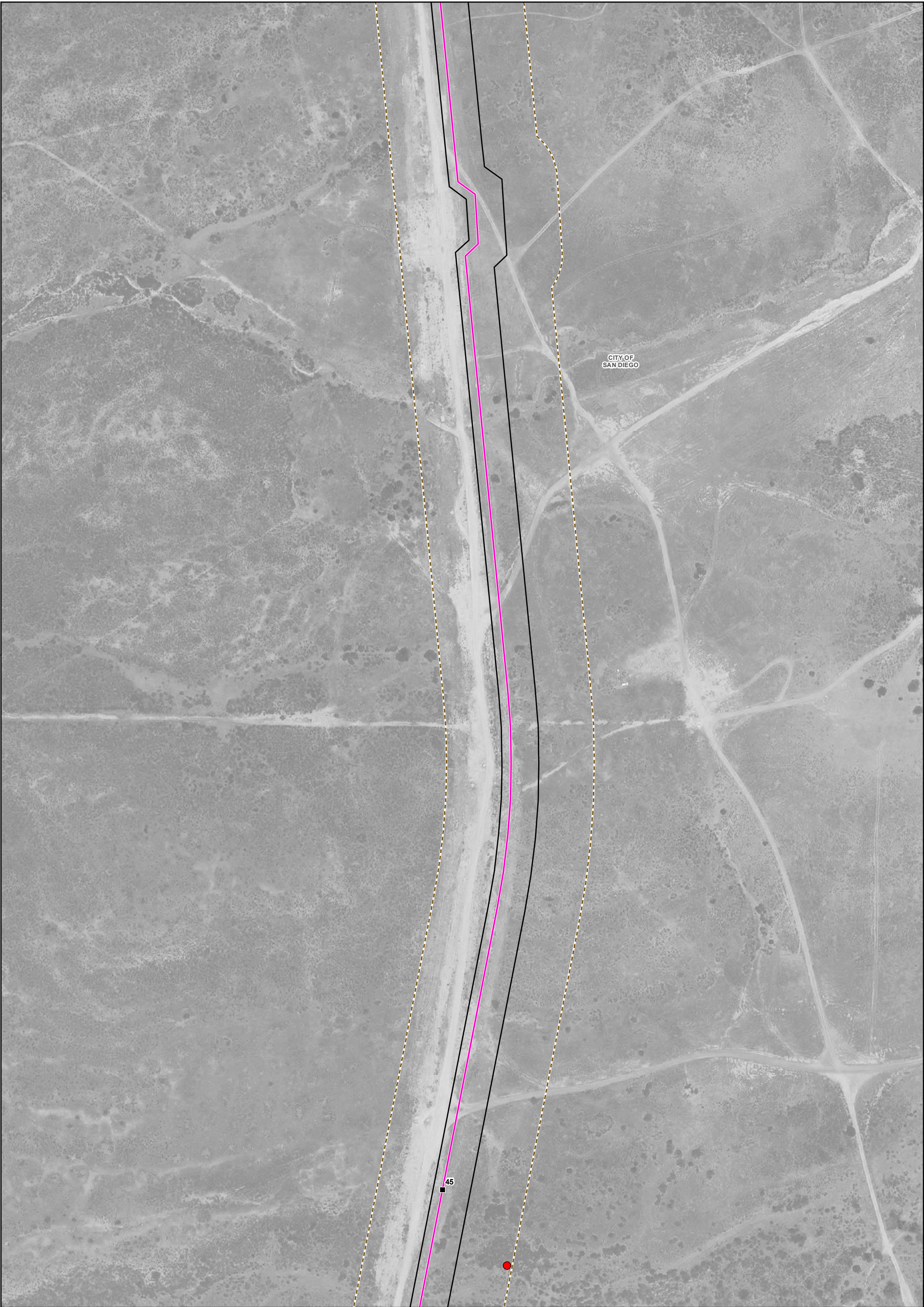


Figure A-6: Special-Status Wildlife Occurrences Map 30 of 33 Pipeline Safety & Reliability Project

■ Milepost

— Proposed Project Route

--- Proposed Trenchless Construction

— Cross-Tie Connector Line

Existing Facility

Permanent Impacts

Aboveground Facility

Temporary Impacts

Horizontal Directional Drill Workspace

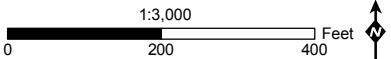
Laydown Area

Workspace

Biological Resource Survey Area

City/County Boundary

● Hermes copper butterfly host plant (spiny redberry)



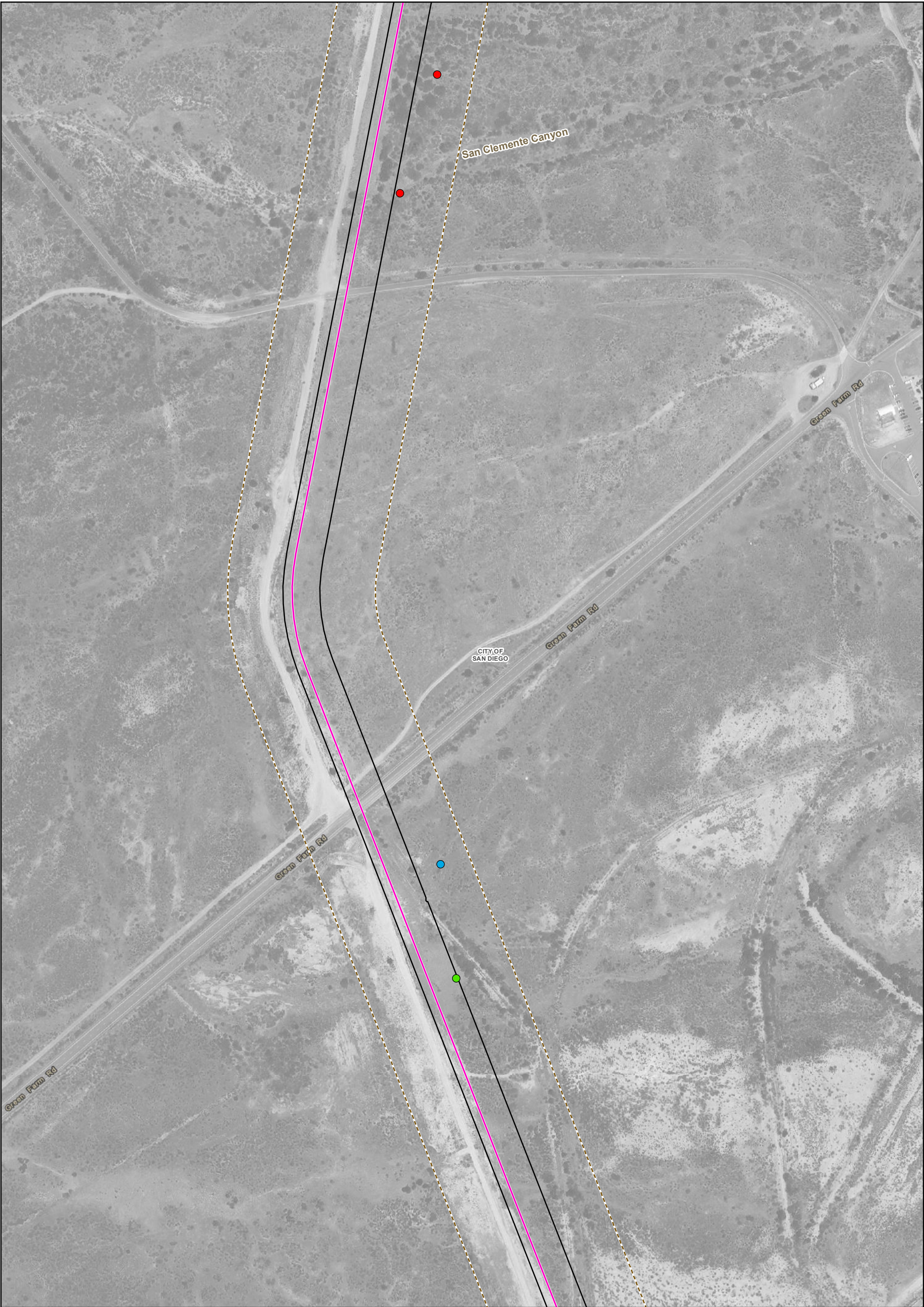


Figure A-6: Special-Status Wildlife Occurrences Map 31 of 33 Pipeline Safety & Reliability Project

■ Milepost

— Proposed Project Route

--- Proposed Trenchless Construction

— Cross-Tie Connector Line

Existing Facility

Permanent Impacts

Aboveground Facility

Temporary Impacts

Horizontal Directional Drill Workspace

Laydown Area

Workspace

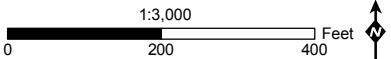
Biological Resource Survey Area

City/County Boundary

Coast horned lizard

Northern harrier

Hermes copper butterfly host plant (spiny redberry)



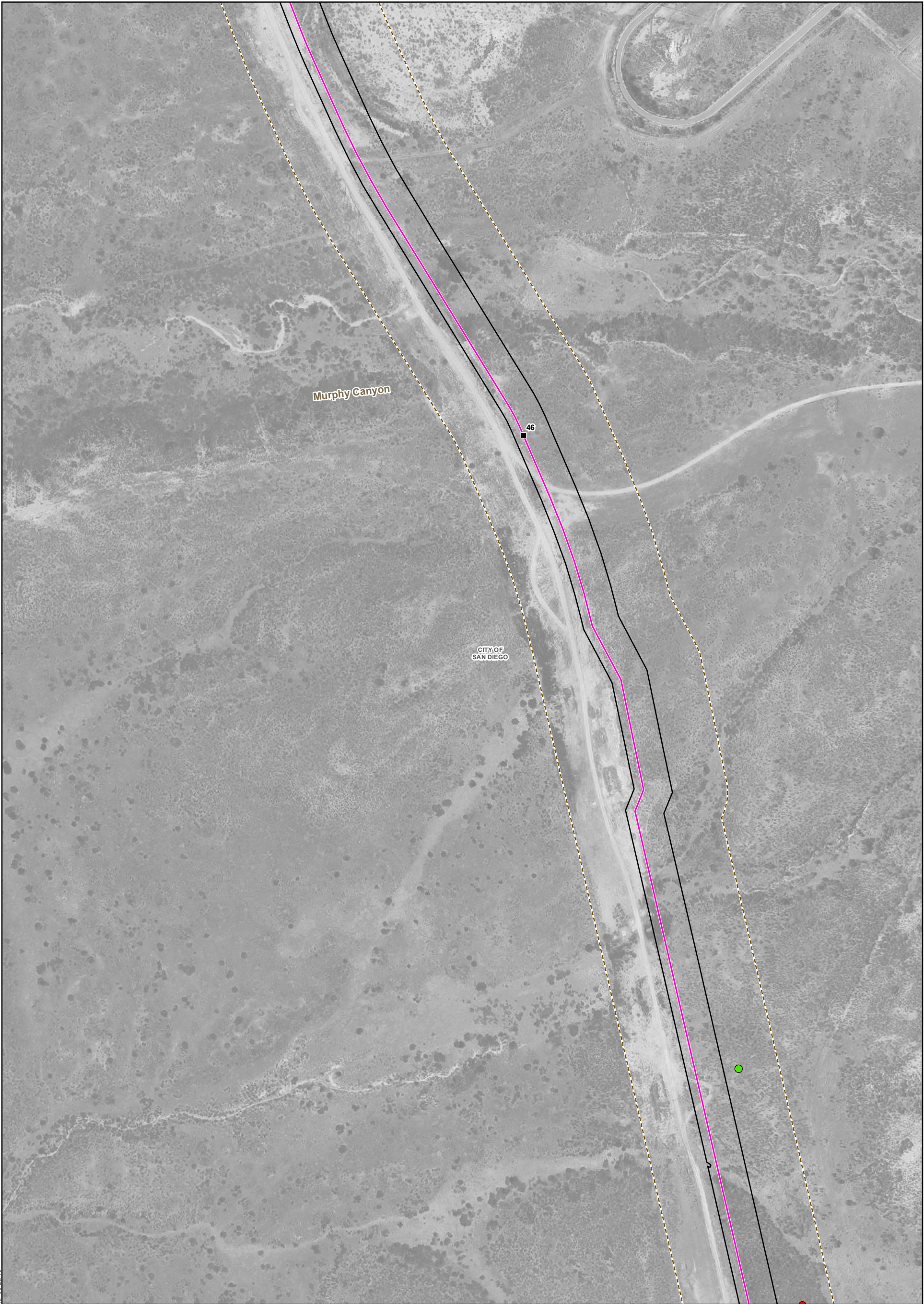
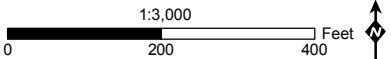


Figure A-6: Special-Status Wildlife Occurrences Map 32 of 33

Pipeline Safety & Reliability Project

■ Milepost	Permanent Impacts	■ Biological Resource Survey Area	● Coast horned lizard
— Proposed Project Route	▭ Aboveground Facility	▭ City/County Boundary	● Hermes copper butterfly host plant (spiny redberry)
- - - Proposed Trenchless Construction	Temporary Impacts		
— Cross-Tie Connector Line	▭ Horizontal Directional Drill Workspace		
▭ Existing Facility	▭ Laydown Area		
	▭ Workspace		



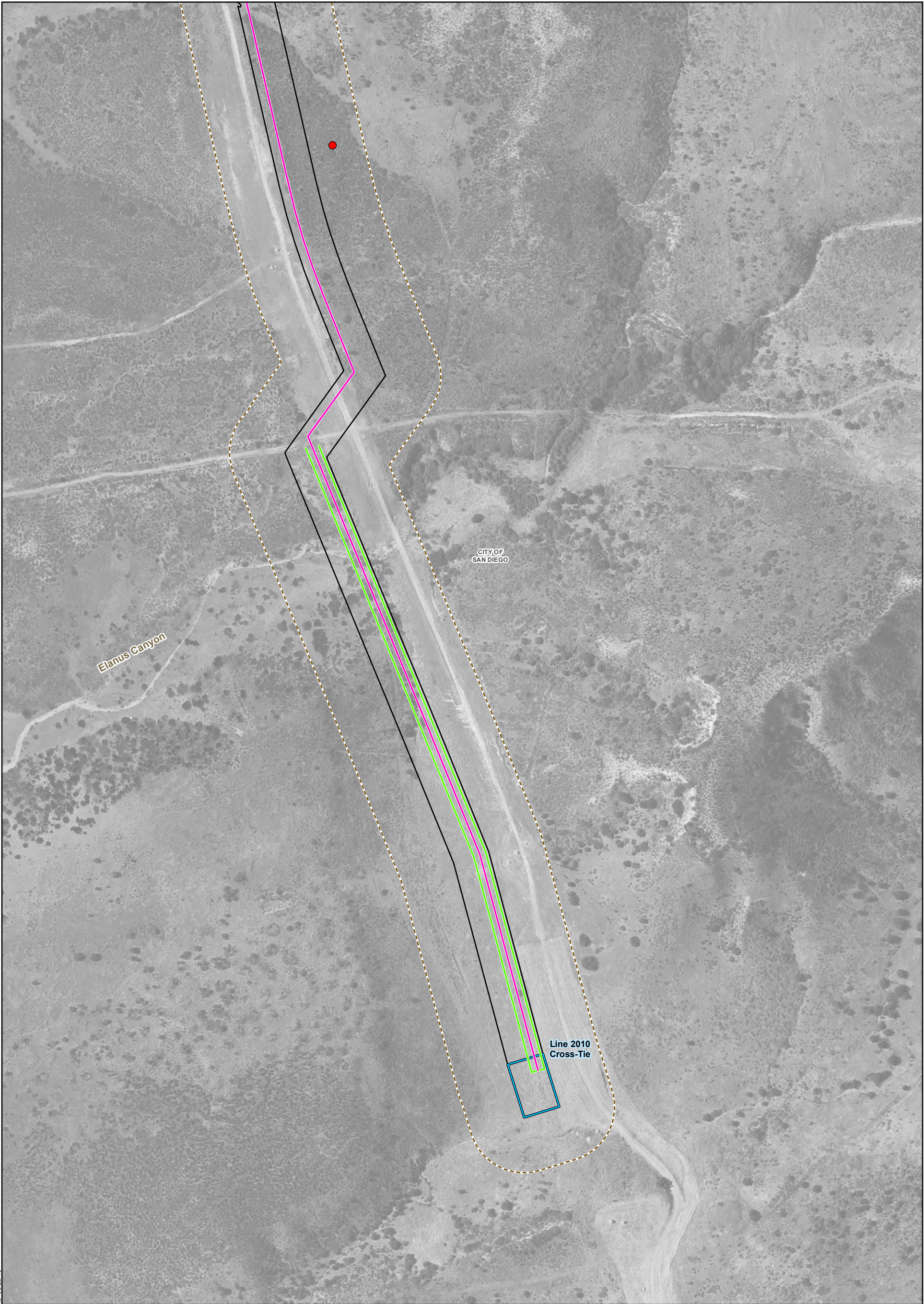


Figure A-6: Special-Status Wildlife Occurrences Map 33 of 33 Pipeline Safety & Reliability Project

■ Milepost

— Proposed Project Route

--- Proposed Trenchless Construction

— Cross-Tie Connector Line

Existing Facility

Permanent Impacts

Aboveground Facility

Temporary Impacts

Horizontal Directional Drill Workspace

Laydown Area

Workspace

Biological Resource Survey Area

City/County Boundary

● Hermes copper butterfly host plant (spiny redberry)

